



The GRM 250 is a portable jobsite glass lifter

with the ability to transport, lift and tilt large glass panels

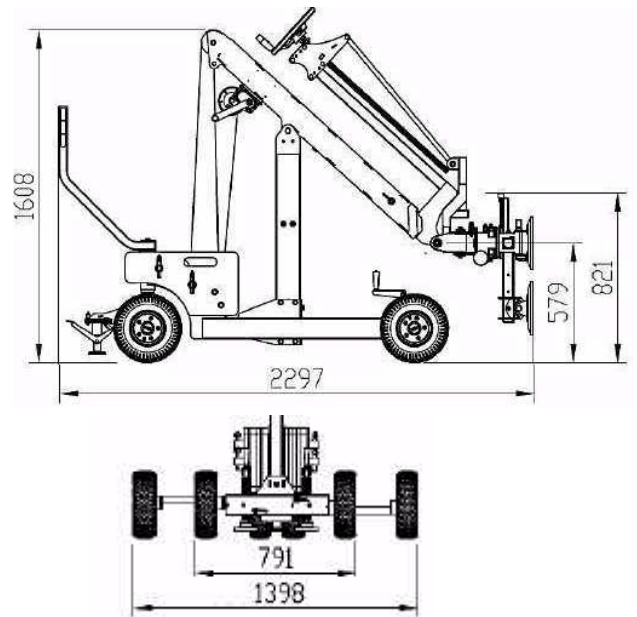
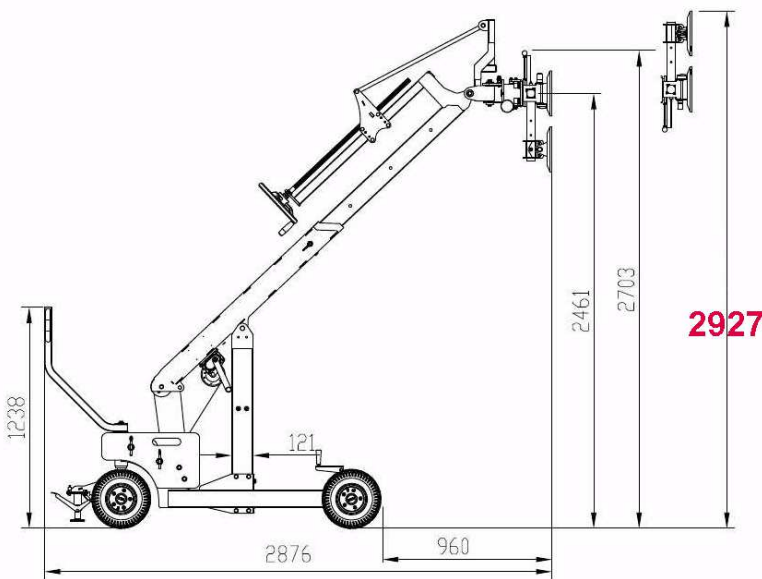
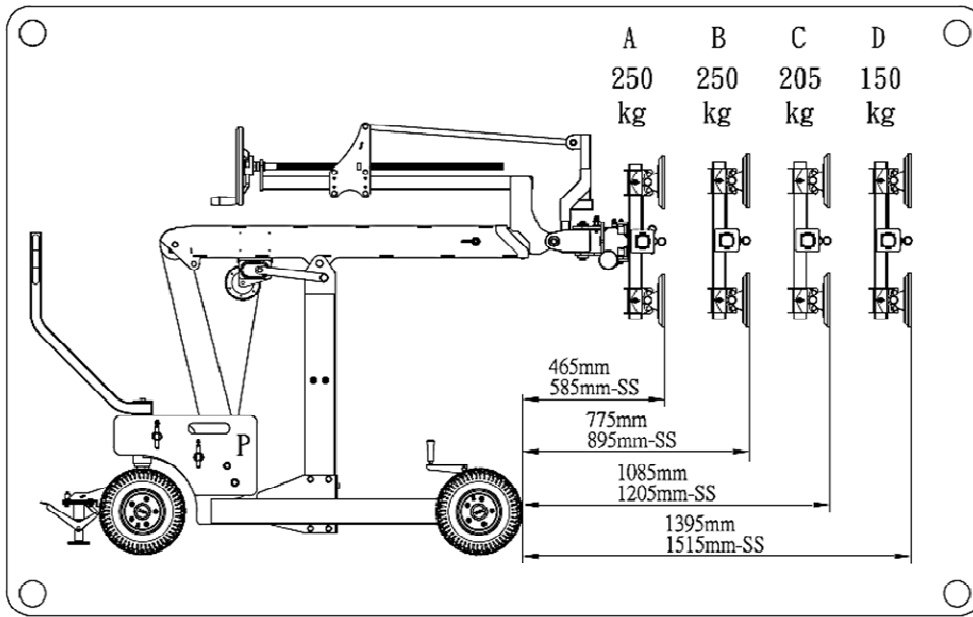
- Narrow turning radius
- Big ground clearance
- Perfect for small pro-duction facilities.
- Flexible head
- Manual winch with automatic brake
- Turnable cradle to 360° with 4 manual pump system (each load capacity 100 kg safety load 70 kg)
- For an easy transport, it is possible to assemble it on the job site



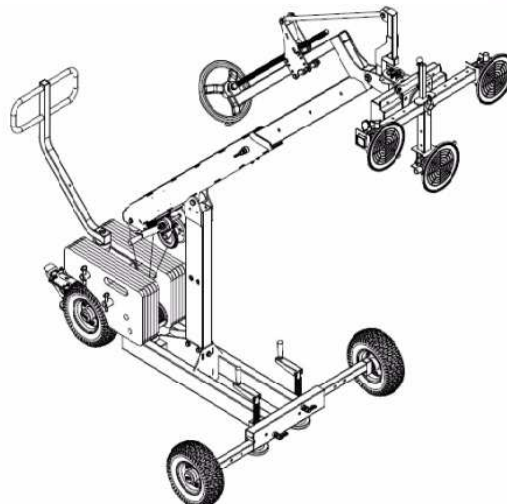
Easy micro-adjust for manipulate lifting
Tilting by manual winch during handle the glass panel to different position



Wheel base adjust distance from 791 mm to 1398 mm for better stabilization

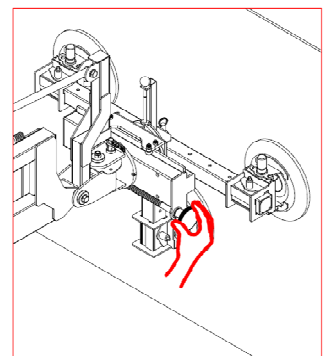
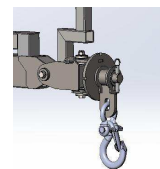


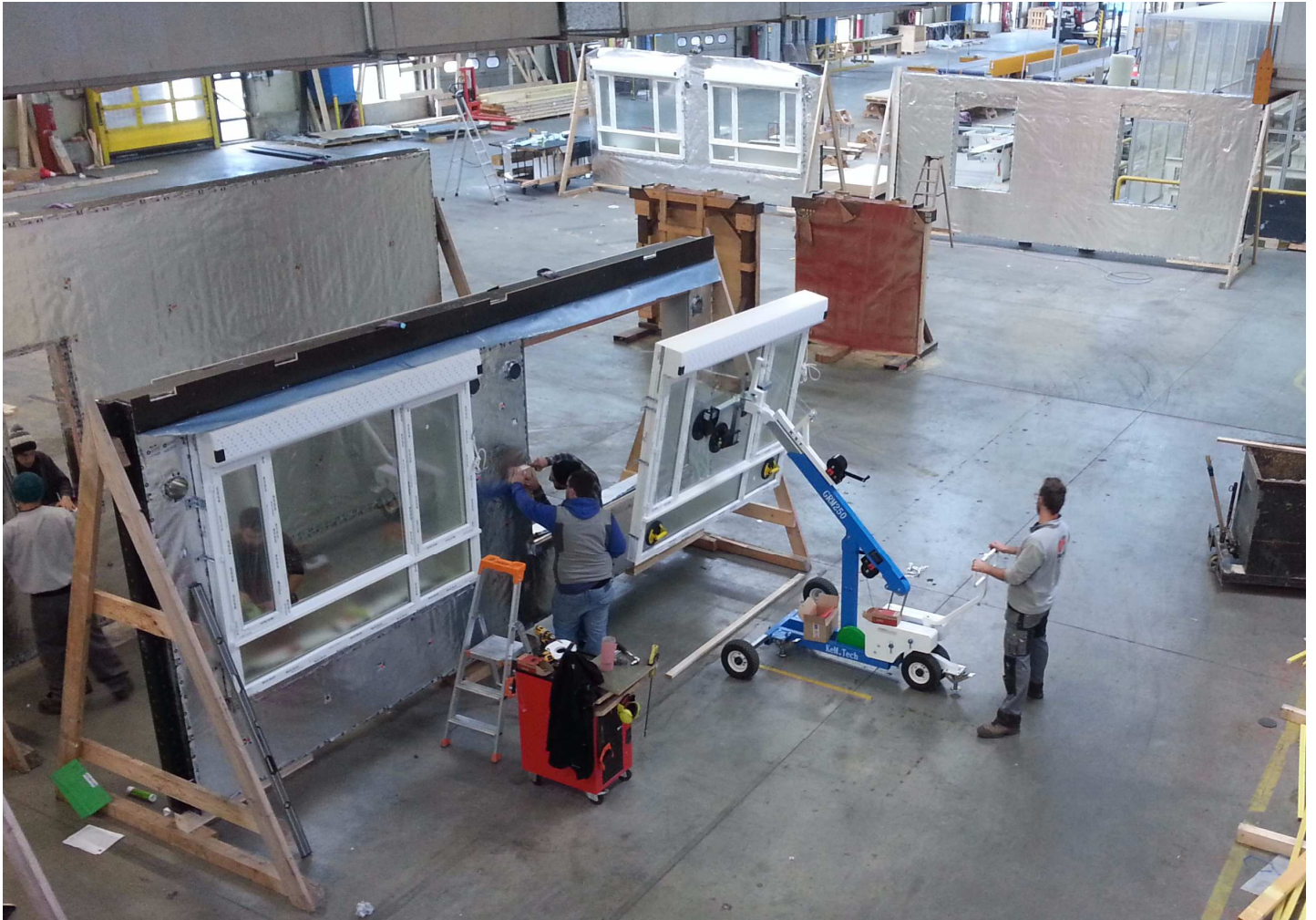
Max. load capacity	250 kg
Weight with set of counterweight	461 kg
Counter weight quantity	12
weight	19 kg



Options

1. Load hook
2. Side shift system (210 mm)





Dispositif de translation horizontale du palonnier pour faciliter l'installation du vitrage



